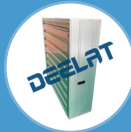


Deelat offers 4 different models of commercial exhaust fans in various sizes ranging from 710mm (28 inches) to 1250mm (55 inches) in diameter. DEELAT fans are SAA approved and certified to the highest electrical standards. All commercial exhaust fans are belt drive motor models.

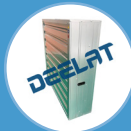
When selecting a Commercial Exhaust Fan on DEELAT, the main differences between the models are the thickness of the galvanized steel, the fan blade size, and the noise level.



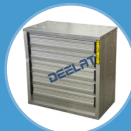
The **WALL MOUNT** industrial exhaust fans are our simplest model and do not come equipped with louvers. They are built with a thin galvanized steel casing and a steel grating on the side that draws the air. These are best used in internal applications where weather does not factor into the application.



The **STANDARD** industrial exhaust fans are the most economical of the louver style models, designed so that the air generated from the fan is what pushes open the louvers. The louvers need to be lighter in weight in order to be pushed open and are made from a thinner galvanized steel. This also means that it provides less protection from outside weather. Best used in climates that are less severe or applications where the fan is partially protected from the elements.



The **HEAVY HAMMER** industrial exhaust fans utilize a hammer system, that in conjunction with the air pressure generated from the fan, allows the heavier louver (thicker galvanized steel than our STANDARD model) to be pushed open. It offers slightly improved protection from outside weather and the elements.



The **PUSH PULL** centrifugal fan uses a mechanism that pushes the louvers open as the fan blades spin. These fans use our heaviest and thickest grade of galvanized steel louver and the push pull mechanism allows the louvers to fully open while in use and remain fully horizontal. This system is the most efficient for air flow since the air generated is not required to keep the louvers open. The radius of the fan blades are also the largest on our PUSH PULL model. It also has the quietest operation of the 4 models.



Generally, when looking at the fans from an airflow perspective, smaller diameter fans will have similar air flow efficiency. However, as the diameter and dimension of the fan grows, and you go into bigger models, you get more efficient airflow, and hence more airflow from the Push Pull Style fan. As you go up the range, the galvanized steel is thicker and stronger which results in a higher price point.

## WALL MOUNT



SKU	Size	Diameter	Fan Speed	Air Volume	Air Pressure	Noise	Wattage	Voltage
D1143849	31.5*31.5*16.5"	28"	660 rpm	12,960 CFM	60 Pa	less than 60 dB	370 W	415V (3 Phase)
D1143850	39.4*39.4*13.8"	35.4"	560 rpm	15,715 CFM	60 Pa	less than 70 dB	550 W	415V (3 Phase)
D1143851	43.3*43.3*16.5"	39.4"	600 rpm	19,140 CFM	70 Pa	less than 60 dB	750 W	415V (3 Phase)
D1143852	48*48*16.5"	43.3"	460 rpm	22,600 CFM	73 Pa	less than 70 dB	750 W	415V (3 Phase)
D1143853	54.5*54.5*16.5"	49.2"	439 rpm	25,885 CFM	56 Pa	less than 60 dB	1100 W	415V (3 Phase)
D1143854	60.4*60.4*16.5"	55"	325 rpm	32,843 CFM	60 Pa	less than 60 dB	1500 W	415V (3 Phase)

## STANDARD



D1143843	31.9*31.9*15"	28"	560 rpm	10,418 CFM	60 Pa	less than 70 dB	370 W	415V (3 Phase)
D1143844	39.4*39.4*15"	35.4"	560 rpm	15,715 CFM	62 Pa	less than 70 dB	550 W	415V (3 Phase)
D1143845	43.3*43.3*15"	39.4"	560 rpm	19,070 CFM	60 Pa	less than 70 dB	750 W	415V (3 Phase)
D1143846	48*48*15"	43.3"	440 rpm	22,955 CFM	55 Pa	less than 70 dB	750 W	415V (3 Phase)

## HEAVY HAMMER



D1143836	31.9*31.9*15.7"	28"	560 rpm	10,418 CFM	55 Pa	less than 65 dB	370 W	415V (3 Phase)
D1143837	39.4*39.4*15.7"	35.4"	560 rpm	15,715 CFM	60 Pa	less than 65 dB	550 W	415V (3 Phase)
D1143838	39.4*39.4*15.7"	39.4"	560 rpm	19,070 CFM	60 Pa	less than 65 dB	750 W	415V (3 Phase)
D1143839	48*48*15.7"	43.3"	440 rpm	22,955 CFM	60 Pa	less than 65 dB	750 W	415V (3 Phase)
D1143840	54.5*54.5*15.7"	49.2"	440 rpm	26,839 CFM	60 Pa	less than 65 dB	1100 W	415V (3 Phase)
D1143841	60.4*60.4*15.7"	55.1"	440 rpm	35,315 CFM	60 Pa	less than 65 dB	1500 W	415V (3 Phase)

## PUSH-PULL



D1143830	31.9*31.9*17.7"	28"	560 rpm	10,418 CFM	55 Pa	less than 65 dB	370 W	415V (3 Phase)
D1143831	39.4*39.4*17.7"	35.4"	560 rpm	15,715 CFM	60 Pa	less than 65 dB	550 W	415V (3 Phase)
D1143832	43.3*43.3*17.7"	39.4"	560 rpm	19,070 CFM	60 Pa	less than 65 dB	750 W	415V (3 Phase)
D1143839	48*48*15.7"	43.3"	440 rpm	22,955 CFM	60 Pa	less than 65 dB	750 W	415V (3 Phase)
D1143834	54.5*54.5*15.7"	49.2"	440 rpm	26,839 CFM	60 Pa	less than 65 dB	1100 W	415V (3 Phase)
D1143835	60.4*60.4*17.7"	55.1"	440 rpm	35,315 CFM	60 Pa	less than 65 dB	1500 W	415V (3 Phase)